

# Memory Care

at Edgewood Grand Island



## Memory care at Edgewood offers peace of mind, cozy surroundings, and personalized care.

Alzheimer's disease and other forms of dementia have complex symptoms that impact each person differently. Edgewood's memory care communities feature a smaller setting with more staff available to provide individualized support to those experiencing memory loss.

Our specially trained staff members help residents feel safe, comfortable, and calm despite the challenges that memory loss can create. Memory care residents receive care and encouragement to help them maintain their independence with daily activities. They are also offered recreational opportunities specially designed to bring joy to their day.

### Memory care residents receive:

- 24-hour staffing with access to an LPN
- Personalized safety checks
- Care from staff members who are specially trained in Alzheimer's and dementia
- Three nutritious, home-cooked meals & snacks daily
- Individualized and small group activities
- Laundry and housekeeping services
- Basic utilities (excluding TV, internet and phone)
- Coordination of transportation to medical appointments
- Barbershop/beauty salon services for an additional cost

# Service Packages

To simplify pricing structures, we offer four service-level packages.

Each resident's care plan is personalized to their needs and based on their overall need for daily assistance and acuity. The service packages vary and will be established by an RN (or designee as determined per state regulations) who completes a total resident evaluation before move-in. Packages may include but are not limited to services such as medication management, hygiene-related care such as dressing, bathing, and grooming, oversight and monitoring of blood pressure, blood sugar, weight, and other daily vitals, and help to and from meals.

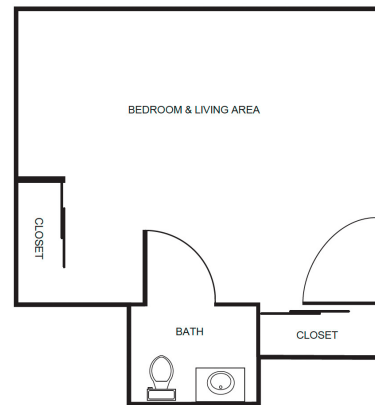
Level 1 .....	\$1,650
Level 2 .....	\$2,250
Level 3 .....	\$2,850
Level 4 .....	\$3,450

# Apartment Rates

*Floorplans may vary.*



Studio starting at .....\$5,500



Companion starting at .....\$4,350

# Additional Rates

Community Service Fee (non-refundable) .....	\$1,250
Assisted Plus starting at .....	\$350
Comfort Care Plus starting at .....	\$350
Second Person .....	\$3,000

*Ask about our short-term stay or adult day services rates and availability!*