

Assisted Living

at Edgewood
Spring Creek Overland



Experience comfort, care, and convenience under one roof - your home!

Edgewood offers customizable services based on each resident's needs. We also provide:

- 24-hour staffing
- Three delicious meals & snacks each day
- Housekeeping, laundry & linen services
- Utilities
- CarePredict wearable device for digital health monitoring
- Activities, outings, & social programs
- Coordination of transportation to appointments

Service Packages

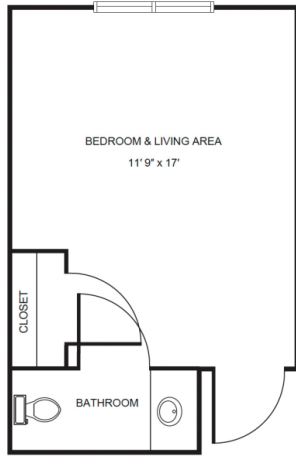
To simplify pricing structures, we offer four service-level packages.

Each resident's care plan is personalized to their needs and based on their overall need for daily assistance and acuity. The service packages vary and will be established by an RN (or designee as determined per state regulations) who completes a total resident evaluation before move-in. Packages may include but are not limited to services such as medication management, hygiene-related care such as dressing, bathing, and grooming, oversight and monitoring of blood pressure, blood sugar, weight, and other daily vitals, and help to and from meals.

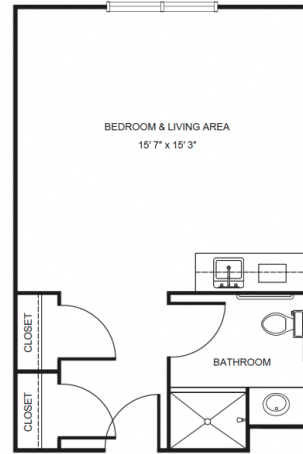
Level 1	\$895
Level 2	\$1,595
Level 3	\$2,395
Level 4	\$3,295

Apartment Rates

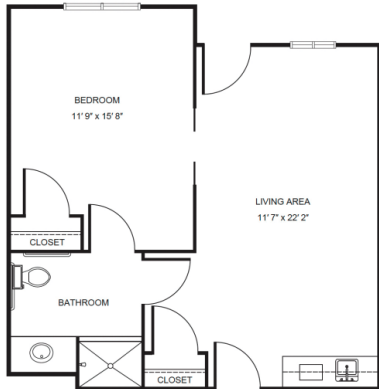
Floorplans may vary.



Studio starting at\$3,450



Deluxe Studio starting at\$4,150
Deluxe Large Studio starting at\$4,250



One Bedroom starting at\$4,750

Companion starting at\$2,850

Additional Rates

Community Service Fee (non-refundable)	\$1,500
Assisted Plus starting at	\$400
Comfort Care Plus starting at	\$400
Second Person	\$1,325

Ask about our short-term stay or adult day services rates and availability!